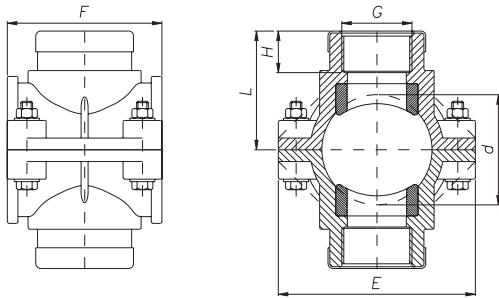


COD. 1032



PRESA A STAFFA DOPPIA
CON ANELLO DI RINFORZO PN16
*DOUBLE CLAMP SADDLE WITH
REINFORCING RING PN 16 bar*



COD	dxG	L	H	E	F	n	PN
1032020002001	20x $\frac{1}{2}$ "	45	25	80	54	2	16
1032025002001	25x $\frac{1}{2}$ "	37	19	80	54	2	16
1032025003001	25x $\frac{3}{4}$ "	43	22	80	54	2	16
1032032002001	32x $\frac{1}{2}$ "	52	24	80	64	4	16
1032032003001	32x $\frac{3}{4}$ "	46	18	80	64	4	16
1032040002001	40x $\frac{1}{2}$ "	51	17	87	74	4	16
1032040003001	40x $\frac{3}{4}$ "	53	20	87	74	4	16
1032040004001	40x1"	60	21	87	74	4	16
1032050002001	50x $\frac{1}{2}$ "	65	24	102	78	4	16
1032050003001	50x $\frac{3}{4}$ "	66	26	102	78	4	16
1032050004001	50x1"	65	24	102	78	4	16
1032063002001	63x $\frac{1}{2}$ "	70	24	116	88	4	16
1032063003001	63x $\frac{3}{4}$ "	86	23	116	88	4	16
1032063004001	63x1"	58	20	116	88	4	16
1032063005001	63x1 $\frac{1}{4}$ "	70	26	116	88	4	16
1032063006001	63x1 $\frac{1}{2}$ "	63	28	116	88	4	16
1032075002001	75x $\frac{1}{2}$ "	81	25	130	88	4	16
1032075003001	75x $\frac{3}{4}$ "	81	26	130	88	4	16
1032075004001	75x1"	80	26	130	88	4	16
1032075005001	75x1 $\frac{1}{4}$ "	81	26	130	88	4	16
1032075006001	75x1 $\frac{1}{2}$ "	80	26	130	88	4	16
1032075007001	75x2"	84	30	130	88	4	16
1032090002001	90x $\frac{1}{2}$ "	90	25	150	88	4	16
1032090003001	90x $\frac{3}{4}$ "	90	27	150	88	4	16
1032090004001	90x1"	90	27	150	88	4	16
1032090005001	90x1 $\frac{1}{4}$ "	90	24	150	88	4	16
1032090006001	90x1 $\frac{1}{2}$ "	90	30	150	88	4	16
1032090007001	90x2"	90	29	150	88	4	16
1032110002001	110x $\frac{1}{2}$ "	100	24	175	107	6	16
1032110003001	110x $\frac{3}{4}$ "	100	27	175	107	6	16
1032110004001	110x1"	100	25	175	107	6	16
1032110005001	110x1 $\frac{1}{4}$ "	100	26	175	107	6	16
1032110006001	110x1 $\frac{1}{2}$ "	105	30	175	107	6	16
1032110007001	110x2"	105	30	175	107	6	16